

+34 634 74 91 60  
+34 658 86 97 13



info@garantconsultingplus.com

---

Commercial in Benahavís

Reference: R4028470



Bedrooms: by request

Bathrooms: by request

M²: 2,732

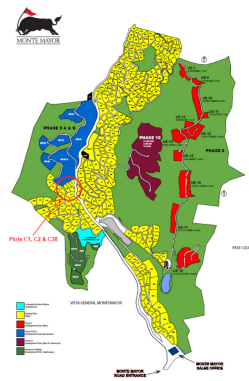
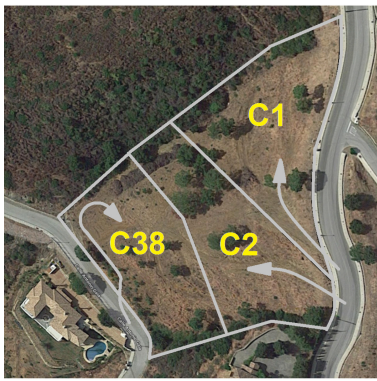
Price: 480,000 €

Status: Sale

Property Type: Commercial Parking places: by request

Printing day : 25th August  
2025

---




---

Overview: The best Southwest facing plots in Monte Mayor with outstanding views. All 3 plots come with a building license and project. Each plot can be bought individually or all 3 plots can be bought together and be merged in to one huge plot. C1 : €480,000 (2,732 m<sup>2</sup>) C2: €350,000 (2,523 m<sup>2</sup>) C38 : €470,000 (2,930 m<sup>2</sup>) All 3 plots together : €1,275,000

---

Features:

Sea views, Mountain views, Investment