

+34 634 74 91 60
+34 658 86 97 13



info@garantconsultingplus.com

Penthouse in Elviria

Reference: R3812029

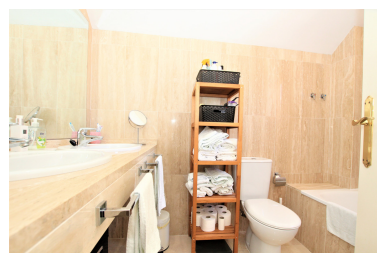


Bedrooms: 2
Status: Sale

Bathrooms: 2
Property Type: Penthouse

M²: 106
Parking places: by request

Price: 450,000 €
Printing day : 17th May 2025



Overview: Magnificent duplex penthouse with stunning views over looking the Santa Maria Golf course and the Mediterranean coast line. On the lower level you will find a bright and airy lounge/diner, fully fitted kitchen, en suite bedroom and huge terrace that's wraps around the whole apartment. All rooms on this level have access to this terrace and it lends itself to breath taking views of the green rolling hills at the rear and sea and golf views from the side and front. Due to the angle, it points to the east, south and west with all day sunshine, making this apartment the best in the whole complex!! On the upper level you have the master suite with a private terrace and panoramic views over the whole area. Features include air conditioning throughout, fitted wardrobes, both bedrooms en suite, fibre optic internet and a private underground parking with storage room comes included in the price. Set within a secure gated complex with communal gardens and two pools. Walking distance to the Santa Maria Golf and country club. The beach, shops and restaurants are a three minutes drive, Marbella town centre is a twelve minutes drive and just 30 minutes to Málaga Airport.

Features:

None, Pool, Heating, Sea views, Mountain views, Lift, None, Private garden, Alarm system, Parking, Investment, Resale