

+34 634 74 91 60
+34 658 86 97 13



info@garantconsultingplus.com

Commercial in Benahavís

Reference: R2220041



Bedrooms: by request

Bathrooms: by request

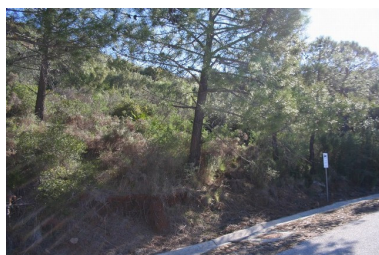
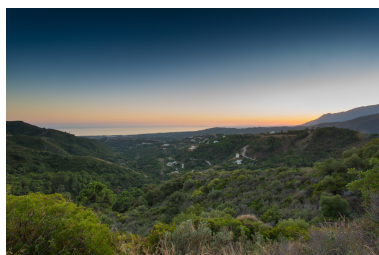
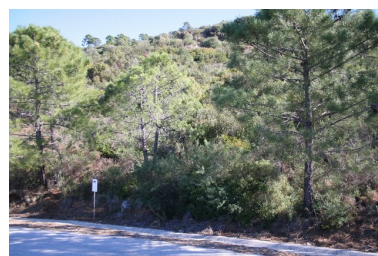
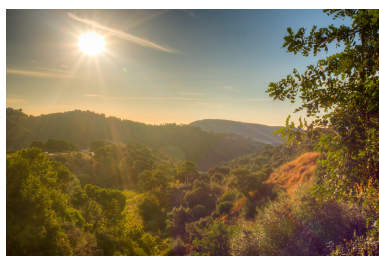
M²: 402

Price: 295,000 €

Status: Sale

Property Type: Commercial Parking places: by request

Printing day : 25th August
2025



Overview: This Southwest residencial (building) plot for sale is located in a beautiful Estate. Nestling in a sheltered valley high in the hills of the municipality of Benahavís, famed for its rural beauty, charm and gastronomic delights, lies this spectacular estate. A paradise awaiting discovery. Commanding unparalleled views of the Mediterranean, Gibraltar and the African coastline, this exclusive residential estate enjoys a magnificent natural setting, surrounded by a dramatic mountain range, lush vegetation and bubbling brooks. But you are far from isolated. The coast is only a 15 minute drive away, with its lovely beaches and the glamorous resorts of Puerto Banús and Marbella where you can find an abundance of leisure opportunities, exclusive beach clubs, boutique shops, fine dining and exciting nightlife. It is also only a 45 minute drive from both Málaga and Gibraltar international airports, making it easily accessible from Europe and beyond. The estate offers an unprecedented variety of living opportunities including a picturesque Andalusian village, comprising of unique townhouses, as well as superb villas. It is an exclusive rural address with privacy, 24/7 private security, tranquility and the most natural surroundings, this estate is a cut above the rest.

Features:

Mountain views